

WŁODZIMIERZ GODLEWSKI

## NAQLUN, EGYPT – FAYUM OASIS, SEASON 2011

The Mission from the Polish Centre of Mediterranean Archaeology of the University of Warsaw (PCMA), directed by the author, carried out the excavations at Naqlun (Fayum Oasis, Egypt) from 17 September to 13 October, 2011.<sup>1</sup> The excavations were continuation of works on the central kom of the monastic complex of Nekloni at three sites: Hermitage A, Refuse Dump (Site B) and North Building (Site K.1).

### Central complex on Kom A

The original early 6<sup>th</sup> c. hermitage on Kom A in the central part of the Naqlun complex comprised a tower (Building A) and two buildings: AA.30 and J. It grew successively, adding the rooms belonging to Structures AA.40 and AA.50, even as Building J was redesigned and shut off from the complex when its northern entrances from Street S.1 were blocked.

By the 8<sup>th</sup> c. there were two separate complexes: Hermitage A with Buildings AA.30, 40 and 50, and Building J which was incorporated into the newly built complex on the south, erected here on top of a rocky rise. A fire in the mid-10<sup>th</sup> c. destroyed this arrangement and the buildings appear to have been abandoned. More than a hundred years later, in the 12<sup>th</sup> c., a cemetery was located in the ruins. In 2011, the mission continued work in Hermitage A (Rooms AA.40.6 and 7, AA.50.2 and 3) and in Building J (Unit BJ.11) (Fig. 1).

### Building AA.40

Two rooms of this structure were explored this year. Room AA.40.6 was excavated completely, revealing its western part with a passageway to Building AA.50. It was a kind of narrow vestibule, measuring 5.84×1.06 m, originally accessible from alleys on the south and west.



After a basin had been built in its southern part, the room was accessible only from Room AA.50.3.

Room AA.40.7 was located at the southern entrance to the complex and it may have been where a doorman lived. Found inside this small room, measuring 4×2 m, was a small limestone basin (H. 24 cm, L. 85 cm, W. 47 cm) and a deposit of tableware and kitchenware datable to the 10<sup>th</sup> c. (Fig. 2).

### Building AA.50

Rooms AA.50.2 and 3, the eastern ends of which were excavated this season, constituted part of the central monastic complex enlarged in the 8<sup>th</sup> c. The staircase in AA.50.3, which was preserved up to the first landing, had led once most probably to the upper floor of Building AA.40 (Fig. 1).

<sup>1</sup> The Mission was directed by Prof. Dr. Włodzimierz Godlewski (Institute of Archaeology, University of Warsaw) and composed of: Assist. Prof. Tomasz Derda, papyrologist (IA UW); Dr. Dorota Dzierzbicka, archaeologist (IA UW); Ms. Barbara Czaja-Szewczak, textile conservator (Conservation Labs, Palace-Museum Wilanów); Ms. Katarzyna Danys-Lasek, pottery expert (freelance); Mr. Szymon Maślak, archaeologist (PCMA UW);

Ms. Marzena Ozarek, anthropologist (IA UW); Mr. Władysław Weker, metal conservator (State Archaeological Museum, Warsaw); Ms. Joanna Ciesielska, student (IA UW). The Supreme Council for Antiquities, Department in Fayum, was represented by Mr. Mabruk Ahmed Tawfik, archaeologist and Mr. Ibrahim Ragab, archaeologist.

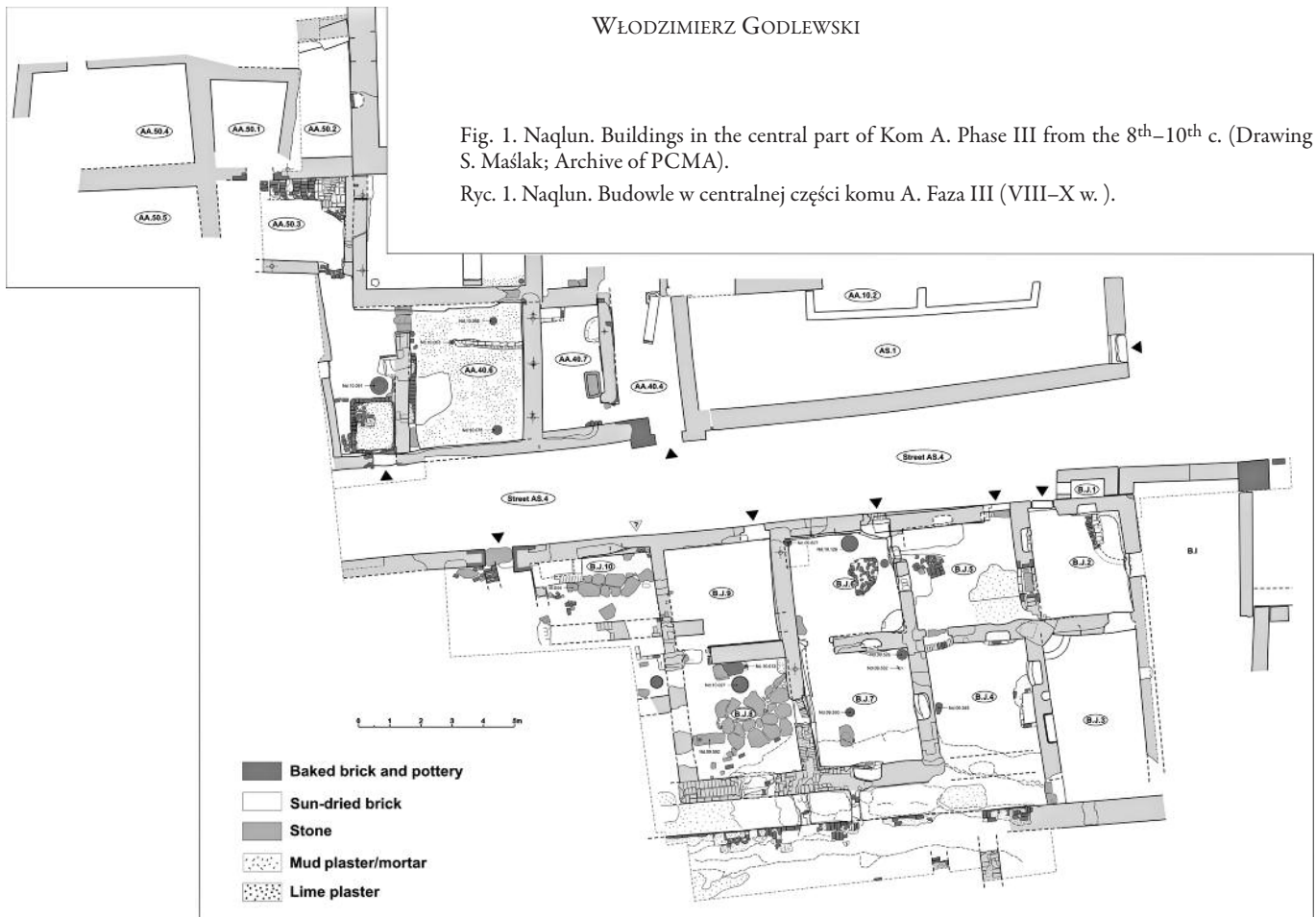


Fig. 1. Naqlun. Buildings in the central part of Kom A. Phase III from the 8<sup>th</sup>–10<sup>th</sup> c. (Drawing S. Maślak; Archive of PCMA).

Ryc. 1. Naqlun. Budowle w centralnej części komu A. Faza III (VIII–X w.).

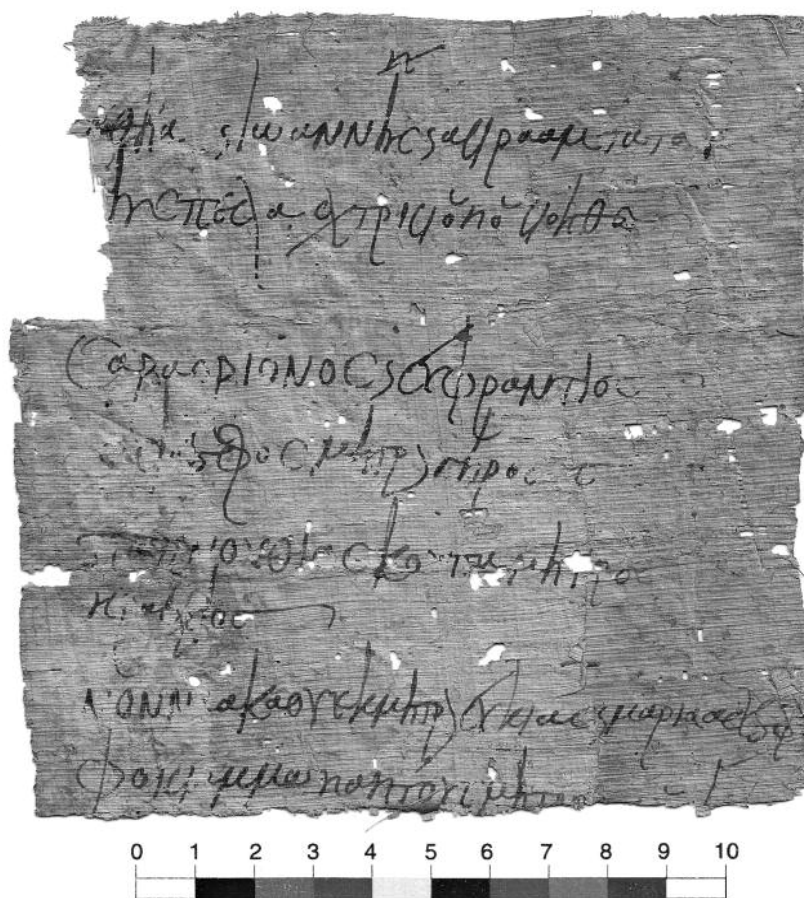


Fig. 2. Room AA.40.7, view from the south (Photo W. Godlewski; Archive of PCMA).

Ryc. 2. Pomieszczenie AA.40.7, widok od południa.

Fig. 3. Part of a Greek text on papyrus from Refuse Dump on Site B (Nd.11.375) (Photo W. Godlewski; Archive of PCMA).

Ryc. 3. Fragment tekstu w języku greckim na papirusie, z depozytu odpadów klasztornych, stanowisko B (Nd.11. 375).



### Building J

The Building J was excavated in the seasons 2009–2010 and only its south part was cleaned in the last season. Room BJ.11 at the southern side of the structure was a narrow passage running by the southern façade, giving entry into the building in its last phase of use (8<sup>th</sup>–10<sup>th</sup> c.). The floor level in the passage was 90 cm above the walking level inside the building rooms. The south wall of BJ.11, preserved residually, was erected on a rocky rise to the south of the complex, occupied by architecture which has been recognized only sketchily so far (Fig. 1).

### Cemetery A

Burials forming part of Cemetery A were explored in the ruins of the excavated rooms (AA.40.6 and 7, as well as AA. 50.3).

Of the 18 graves which were excavated, nine were male, five female, and four children's. All burials except one (T.476) were preserved in skeletal form; their garments and shrouds, coffins and biers completely decomposed. In three graves small glass flasks were found, and one burial contained a bronze belt buckle. Simple jewellery was found only in children's graves.

Fragments of garments, that is, tunics and a silk sash decorated with six tassels, were found in the partly looted Grave T.476. The sash is unparalleled among the textiles uncovered in Cemetery A in Naqlun.

### Refuse Dump at Site B

Continued exploration of the rubbish dump on Kom B centered on two contiguous trenches excavated directly to the west of the trench explored in this area in 2009. This has brought the total excavated area in the rubbish dump up to approximately 42 m<sup>2</sup>.

In the eastern and northern part, it turned out that pits had been cut into the dump. A subterranean mud brick structure (crypts?) was found at the bottom of these pits. However, the layers of refuse were otherwise undisturbed and were explored to bedrock in eight arbitrary layers.

The excavated sector of the dump contained a large variety of material, which provided a great deal of information on several different aspects of monastic life in the

central part of the complex in the period when this part of the dump was in use (approximately from the early 6<sup>th</sup> to the first half of the 8<sup>th</sup> c.). The strata included kitchen refuse, among which were amphorae, cooking pots and tableware, mud stoppers, and food leftovers (animal bones, mollusk shells, fruit pits, etc.). In addition, over eighty diagnostic glass fragments were registered, testifying to the use of glass plates, bowls and cups, as well as wine glasses in the monastery. Among the glass finds there were also fragments of conical lamps and stemmed *polycandelion* lamps, which, together with a nearly complete earthenware lamp and several wicks, produced information on the monastery's repertoire of lighting devices.

Fragments of painted and white plaster, as well as fragments of flat roofs gave an idea of the interior decoration and general appearance of the monastic buildings. They may have come from clearance of buildings that had fallen into disuse or were adapted to new purposes. Among the numerous wood fragments there were several pieces that may have been furniture parts. A large assemblage pointed to industrial activities, e.g., textile making (refuse from flax processing, as well as numerous fibres and threads). Some organic remains do not seem to have been leftovers from human consumption, but from animal fodder and from material used for burning. Last but not least, the strata contained personal effects: fragments of textiles and leather objects, as well as texts on papyrus (Fig. 3), letters and documents, written in Greek.

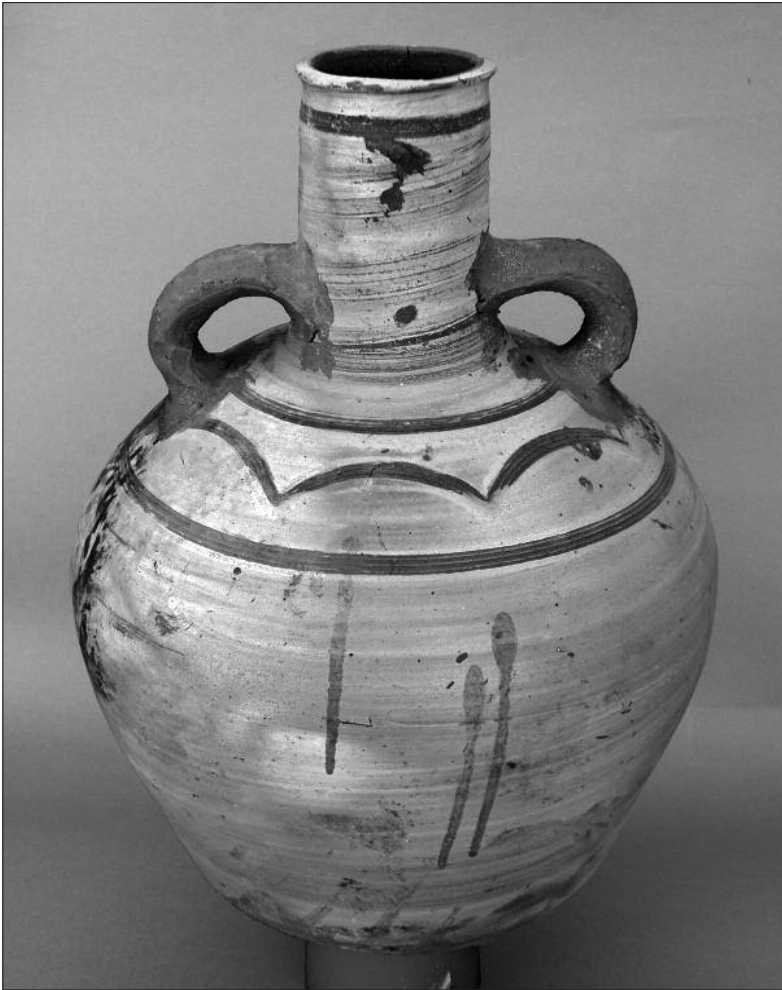
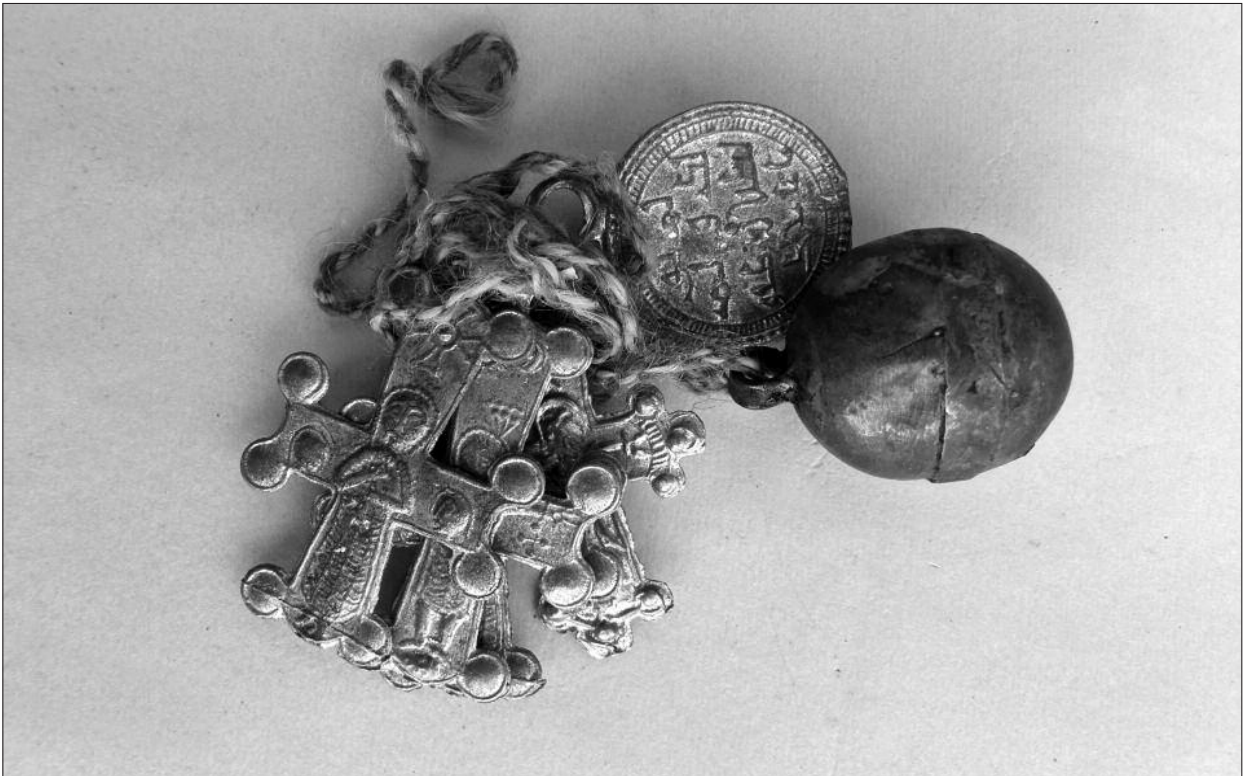


Fig. 4. Amphora from Northern Building (Nd.11.231) (Photo W. Godlewski; Archive of PCMA).

Ryc. 4. Amfora z Budowli Północnej (Nd. 11.231).

Fig. 5. A deposit of votive objects from Northern Building: close-up of four lead crosses (Nd.11.149), a lead plaque (Nd.11.148), and a small bronze bell (Nd.11.147) (Photo W. Godlewski; Archive of PCMA).

Ryc. 5. Depozyt obiektów wotywnych z Budowli Północnej składający się z czterech krzyżyków ołowianych (Nd.11.149), ołowianej plakiety z tekstem w języku arabskim (Nd.11.148) oraz brązowego dzwoneczka (Nd.11.147).



### Site K.1 (Northern Building)

A new site (K.1) was investigated at the northernmost point of the monastic complex of Nekloni, approximately 50 m north of the buildings on Site D. This severely damaged Northern Building was destroyed in a fire and its mud brick walls were disassembled down to foundation level. Two rooms and a storage pit uncovered in the north-eastern part of the building produced important archaeological evidence for the dating of this structure and its furnishings. The walls of the structure, which was most probably a single-storey building, were coated with mud plaster on the inside. Judging by the preserved fragments, drawings and inscriptions in Coptic were found on these walls. The preserved floors were also well coated with a thick layer of mud mortar. Inside the main room were found local amphorae in a good state of preservation, decorated on the shoulders with combed bands (horizontal and wavy lines) (Fig. 4), as well as numerous broken tall vessels and storage jars. They had been stored inside and were buried under a collapse of the burning roof of the building and bricks from its walls. Ten Coptic and Arabic texts on paper including completely preserved documents were preserved inside a storage pit in the north-eastern part of the building.

The most striking discovery was a deposit of votive objects wrapped in a linen cloth found in the north-eastern corner of the main room (Fig. 5). It consists of four small crosses cast of lead and a round lead plaque with an Arabic inscription on both sides (*God is one, He did not beget, nor was He begotten*) which may be a fragment of Sura 112, the manifest of Islamic but also Coptic monotheism. The crosses (Fig. 6) are richly decorated, with figural representations (the Crucifixion on one side and Virgin Mary on the other) and symbols on both sides. They were very carefully made using two different moulds. Votive objects of this type are very rare in Coptic art. Their dating is based on the archaeological context inside this severely damaged room. They were manufactured most probably in the 10<sup>th</sup> c. The bundle also contained a small bell, attested in medieval iconography as an element of the outer garment of a bishop or priest and Late Antique horse trappings (Qustul).



Fig. 6. A lead cross (Nd.11.149) with representation of the Crucifixion (Photo W. Godlewski; Archive of PCMA).

Ryc. 6. Ołowiany krzyżyk (Nd.11. 149) z przedstawieniem ukrzyżowanego Chrystusa.



Fig. 7. Small bronze pot (Nd.10.056) from Tomb T.462 in Cemetery A (Photo W. Godlewski; Archive of PCMA).

Ryc. 7. Małe brązowe naczynie (Nd.10.056) z grobu T.462, cmentarz A.



Fig. 8. Bronze bowl with Arabic inscription (Nd.01.070) from Tomb T.352 in Cemetery A (Photo W. Godlewski; Archive of PCMA).

Ryc. 8. Brązowe naczynie z napisem w języku arabskim (Nd.01.070) z grobu T.352, cmentarz A.

## Conservation

Władysław Weker carried out the conservation of metal objects and jewellery found in previous seasons (1992–2010) and this year in graves in Cemetery A, in rooms of Building J and in Refuse Dump (Site B). A total of 49 objects were subjected to conservation treatment: vessels (Figs. 7, 8), elements of dress, belt buckles, rings, earrings, silver and bronze coins, and fittings of a wooden casket which had been burnt in Room BJ.8.

Other conservation work was conducted on documents written on papyrus, paper and parchment. The documents were unfolded, cleaned and secured between

glass panes. Some of the uncovered pottery vessels were cleaned and reassembled. All of the textiles were cleaned and preserved.

Polish versions of reports from Naqlun are online:  
[www.polacynadnilem.uw.edu.pl](http://www.polacynadnilem.uw.edu.pl)

English versions of reports from Naqlun are online:  
[www.pcma.uw.edu.pl](http://www.pcma.uw.edu.pl)

Prof. dr hab. Włodzimierz Godlewski  
Institute of Archaeology  
University of Warsaw  
[w.godlewski@uw.edu.pl](mailto:w.godlewski@uw.edu.pl)

WŁODZIMIERZ GODLEWSKI

## NAQLUN, EGIPT – OAZA FAJUM, SEZON 2011

Misja wykopaliskowa Uniwersytetu Warszawskiego (Centrum Archeologii Śródziemnomorskiej) kontynuowała w okresie od 17 września do 13 października 2011 roku wieloletni program badawczy nad rozwojem zespołu monastycznego w Naqlun (Oaza Fajum) w Egipcie.

Prace wykopaliskowe prowadzono na terenie centralnego zespołu klasztornej, obejmującego wieżę klasztorną oraz dwie towarzyszące jej budowle: Budowlę AA i Budowlę J na terenie wysypiska śmieci klasztornych (sta-

nowisko B), datowane na VI wiek, oraz w północnej części zabudowy klasztornej. Kontynuowano również badania cmentarza koptyjskiego z XI–XIII wieku. Obiekty metalowe odkryte w 2011 roku, jak również w latach poprzednich (naczynia, lampy, biżuteria), zostały poddane kompleksowej konserwacji. Szersza informacja o wynikach prac misji w 2011 roku, jak również w latach wcześniejszych, znajduje się na stronie internetowej UW:

[www.polacynadnilem.uw.edu.pl](http://www.polacynadnilem.uw.edu.pl)